

research + culture in Los Angeles: The LA Central Library

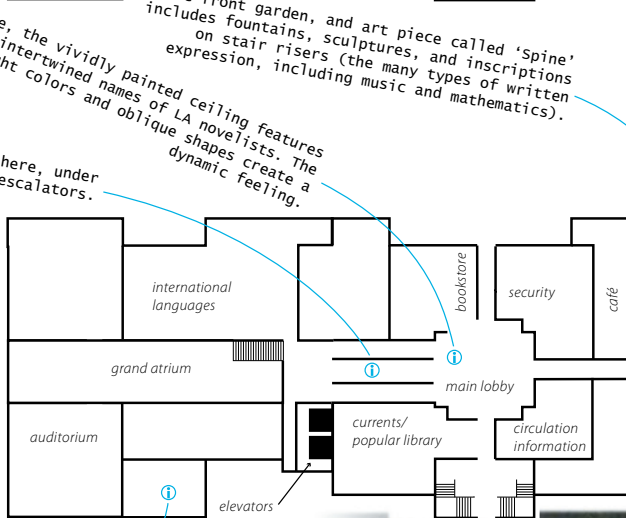
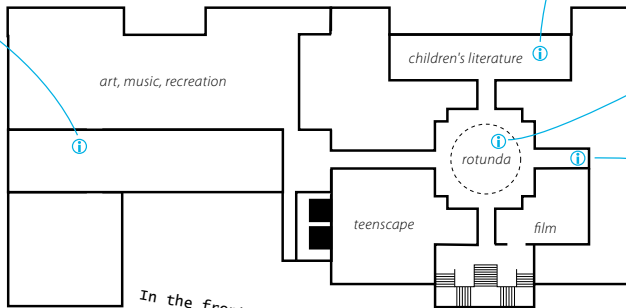
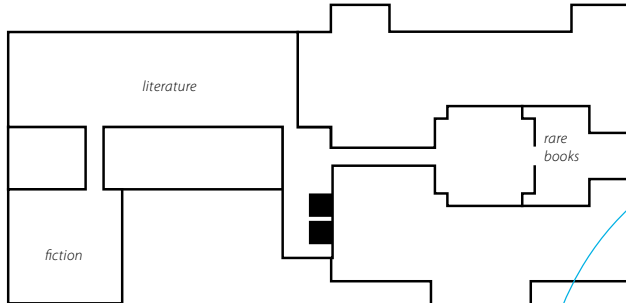
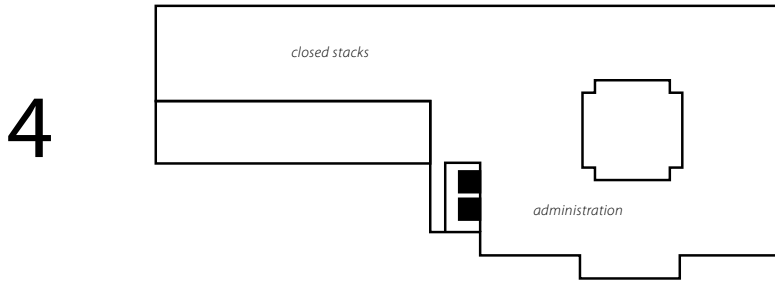
floor plans; upper levels

630 West 5th Street; downtown LA

213-228-7000

[M-Th 10 am- 8 pm; F-Sat 10 am- 6 pm; Sun 1-5 pm]

① = noteworthy



In the children's library, the furniture is smaller than usual. The walls are adorned with California history because this was originally the History department (the original children's murals, of the story of Ivanhoe, are in the International Languages department). The custom-made carpet showcases animals.

The 64-foot-tall rotunda showcases 4 murals, from 1933, that depict 4 eras of California history: discovery (north), mission building (east), americanization (south), and the founding of the city (west). The one-ton chandelier is made of cast bronze (it represents the solar system, and the zodiac, and the 48 states that formed the country when the library opened, in 1926).

Here is the original terra-cotta sculpture of a hand entwined by the Serpent of Knowledge and holding the Torch of Learning, that adorned the top of the library tower. Since it is very fragile, it has been replaced by an exact copy.

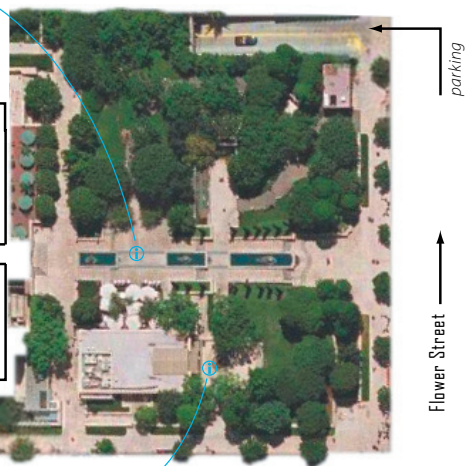
In the front garden, and art piece called 'Spine' includes fountains, sculptures, and inscriptions on stair risers (the many types of written expression, including music and mathematics).

Here, the vividly painted ceiling features intertwined names of LA novelists. The bright colors and oblique shapes create a dynamic feeling.

There are small art galleries here, under the escalators.

This courtyard is enclosed by ornamental metal gates rendered with multilingual inscriptions. There is also a lotus shaft fountain with carvings that illustrate the delights of children's literature.

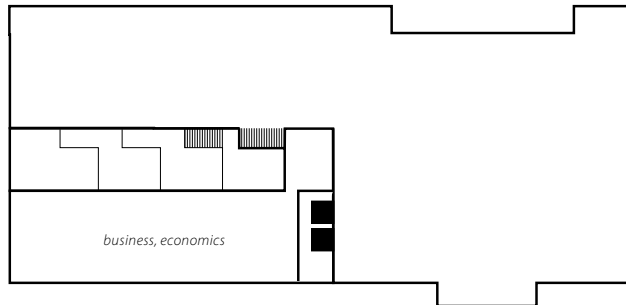
The grotto fountain uses various media to represent the geologic layers underneath the library, and fundamental civil liberties.



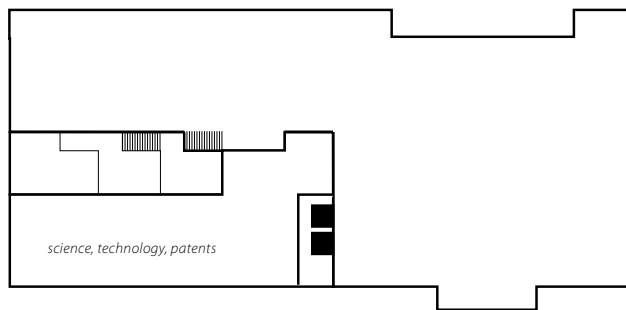
parking
Flower Street
5th Street

research + culture in Los Angeles: The LA Central Library
floor plans; lower levels

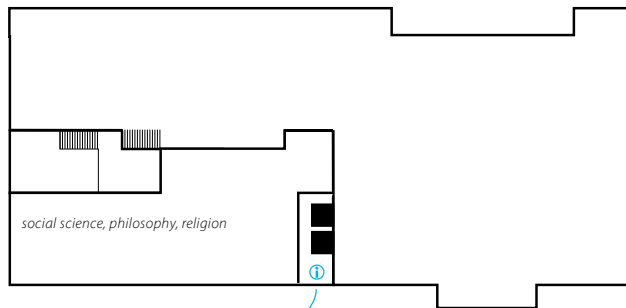
LL1



LL2

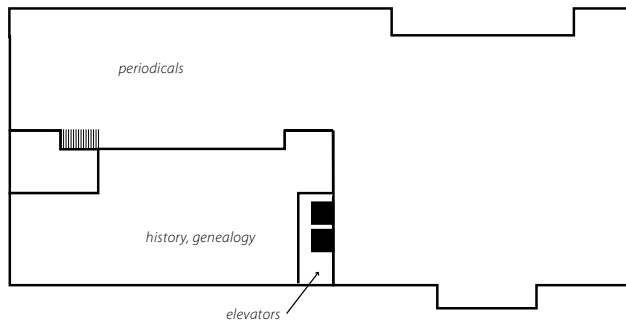


LL3



The elevators shafts are decorated with thousands of obsolete catalog cards, as well as the Dewey Decimal numbers found in each floor.

LL4



research centers in Los Angeles: The LA Central Library description

2 Art, Music, & Recreation

Focus: art history, gardening, architecture, decorative arts, crafts, fashion, artists, photography, music history, music biographies, sheet music and scores, film, dance and indoor/ outdoor recreation and sports.
213-228-7225

art@lapl.org

Databases: Artcyclopedia (www.artcyclopedia.com), Ditto (www.ditto.com), PicSearch (www.picsearch.com), Image Finder (http://sunsite.berkeley.edu/ImageFinder)

Indexes: Art Index on CD-ROM, Museum of Modern Art Artist File, NY Public Library Artists File, The Bettman Portable Archive, Illustration Indexes, The Encyclopedia of World Art, The Picture Dictionary, graphic design books (741.4), signs/ symbols books (753), picture research books (770.7), Picture Clipping File, The Visual Resource Directory, The Stock Photo Desk Book, Directory of Photographic Collections.

Kathleen Ellison, Librarian

kellison@lapl.org

Eileen King

eking@lapl.org

Burda Vandeborne

bvandeb@lapl.org

LL1 Business & Economics

Focus: trade/ association directories, Housing-Urban-Development info (HUD),
213-228-7100

business@lapl.org

Databases: California Manufacturers' Register/ Harris InfoSource (37,000+ California companies), Prospect Research Online (philanthropic data, non-profit organizations), Gale Business Resources (various including Annual Business Ranking, Market Share Reporter, American Industries, Business Directory), Corporate Affiliations (subsidiaries, affiliates, and divisions for 137,000+ international companies).

Kenneth Bernham

kbenham@lapl.org

Sandra Borders

sborders@lapl.org

Lisa Wehrmann

lwehrmann@lapl.org

2 Children's Literature

Focus: fairytales, Californiana, history and criticism of children's literature, fiction, picture books, poetry.
213-228-7250

children@lapl.org

Mara Alpert

malpert@lapl.org

Patti Gonzalez

pgonzalez@lapl.org

Linda Israelson

israelson@lapl.org

LL4 History & Genealogy

213-228-7400

Focus: biography, travel, US wars, the West, Native Americans, Los Angeles, 10,000+ genealogies, map collection (80,000+ maps), periodical holdings, LA photographs (500,000+ photographs).

history@lapl.org

Glenna Dunning

gdunning@lapl.org

Robert Timmermann

rtimmer@lapl.org

1 International Languages

Focus: literature, poetry, drama, history, biography and fiction in 28 different languages, ethnic information, linguistics, translation/ interpretation, language-learning center.

213-228-7125

language@lapl.org

Ken Feder

kfeder@lapl.org

Elisa Gonzalez

egonzalez@lapl.org

Keumsook Hahn

khahn@lapl.org

various Government Documents

The Central Library holds texts published by the U.S. Government Printing Office, U.S. Government Patents & Trademark Office, State of California, United Nations, City of Los Angeles, and County of Los Angeles. These are found in the various departments of the library.